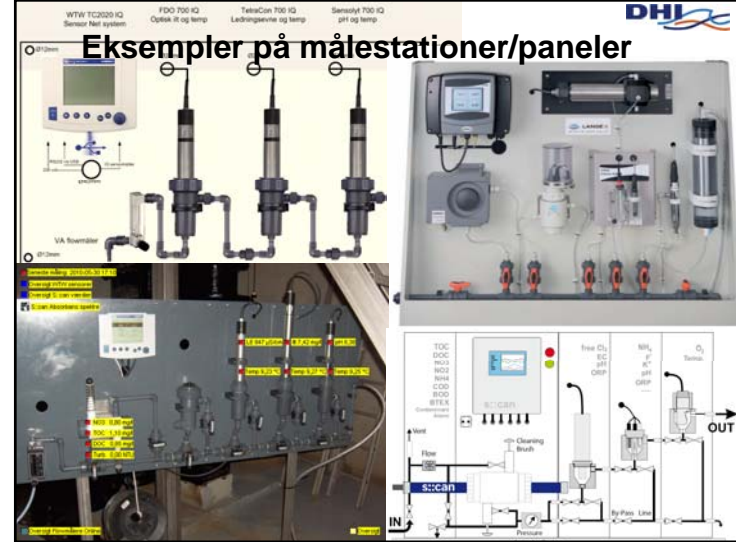


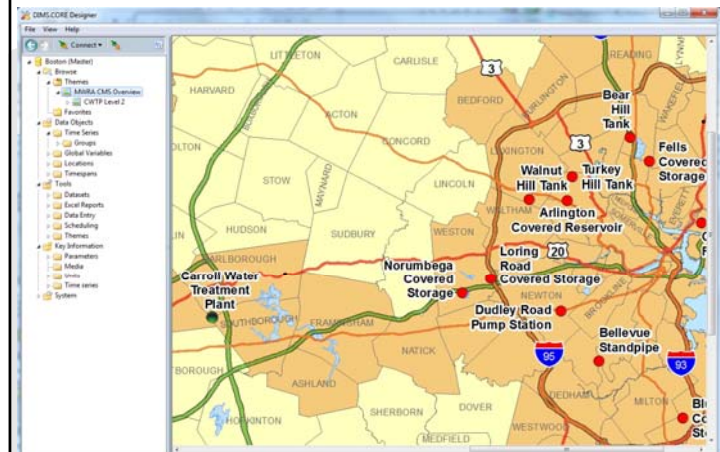
Detektion af vandkvalitetsændringer,
virtuelle sensorer og realtidsmodellering
.....eller muligheder til at få sensor data til at
blive information

Anders Lynggaard-Jensen, DHI

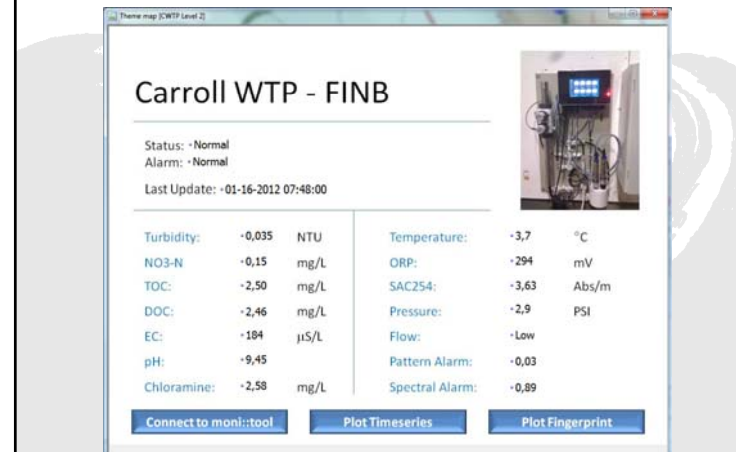


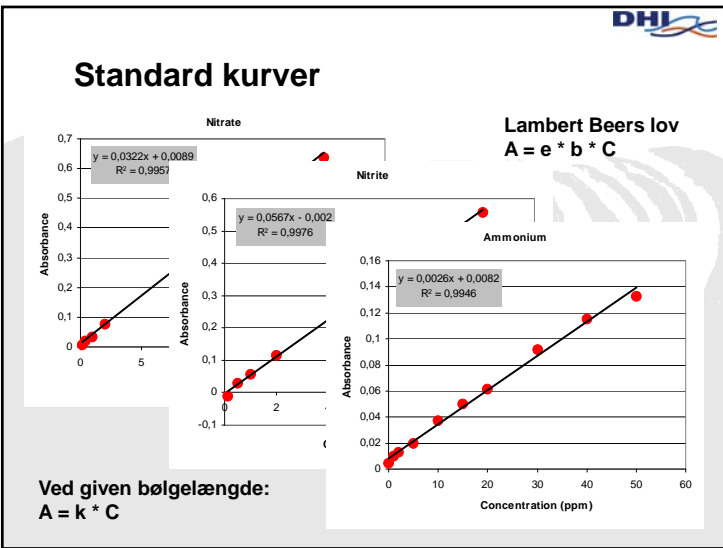
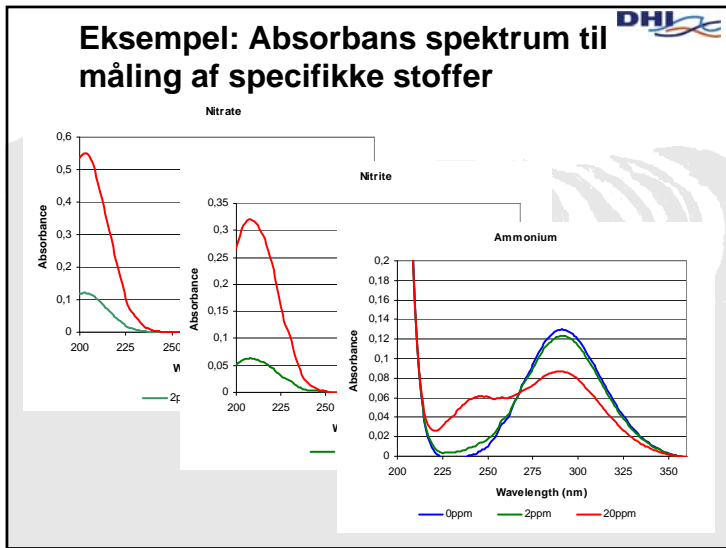
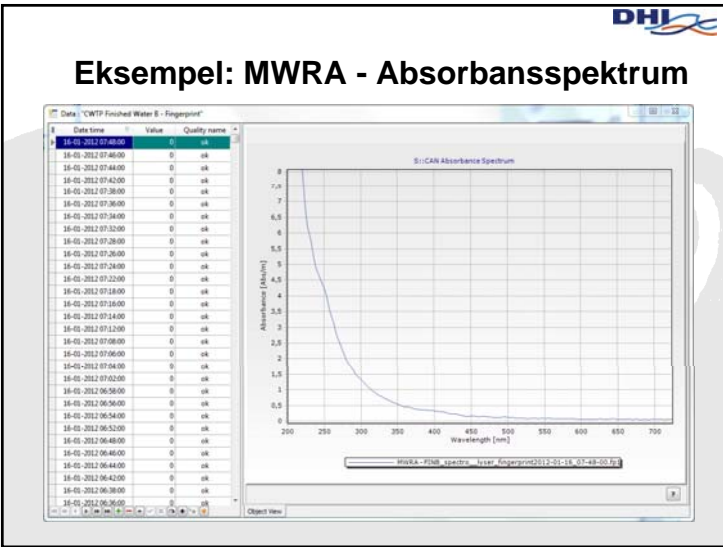
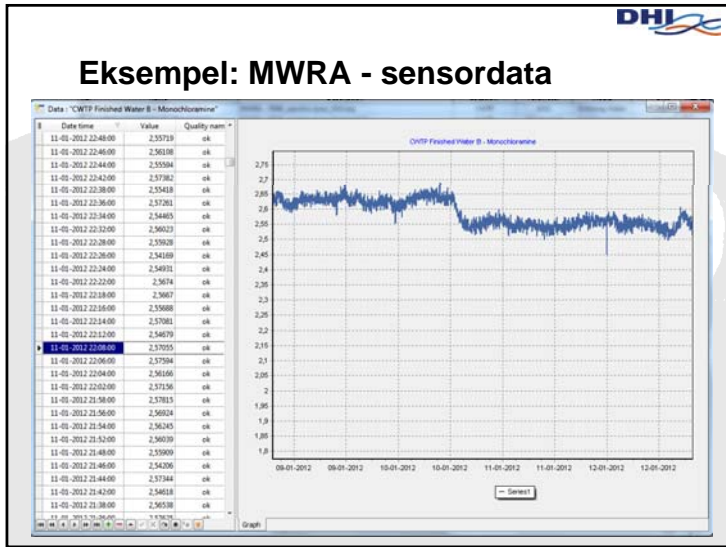
Eksempler på målestationer/paneler

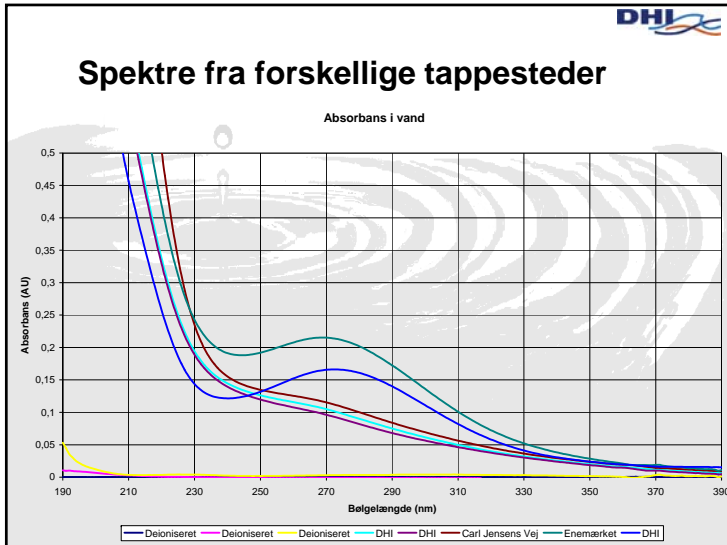
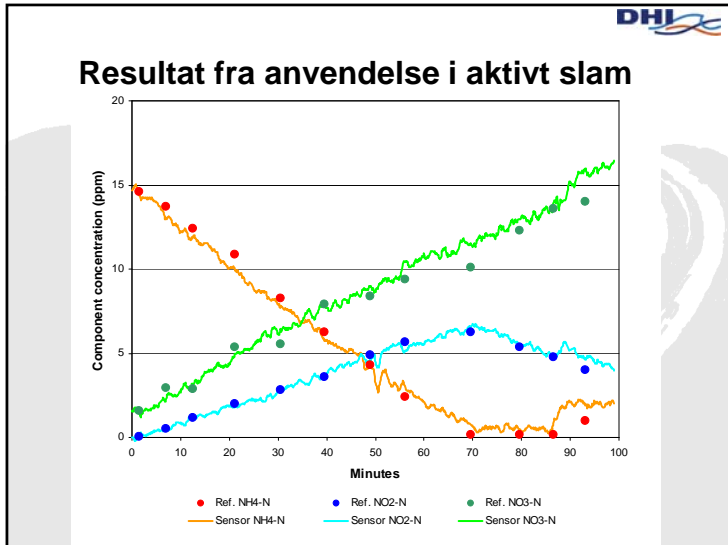
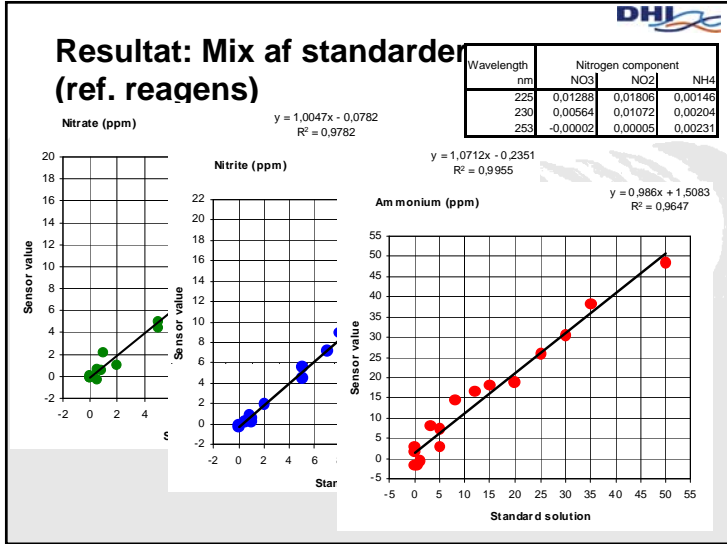
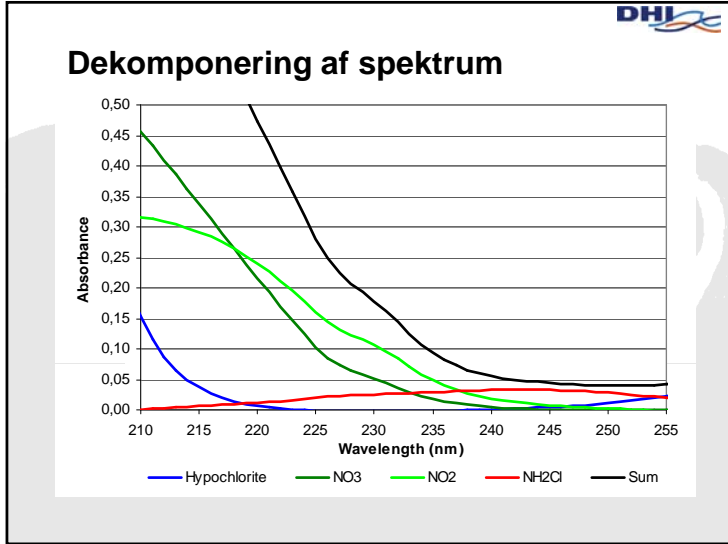
Eksempel: MWRA - oversigt



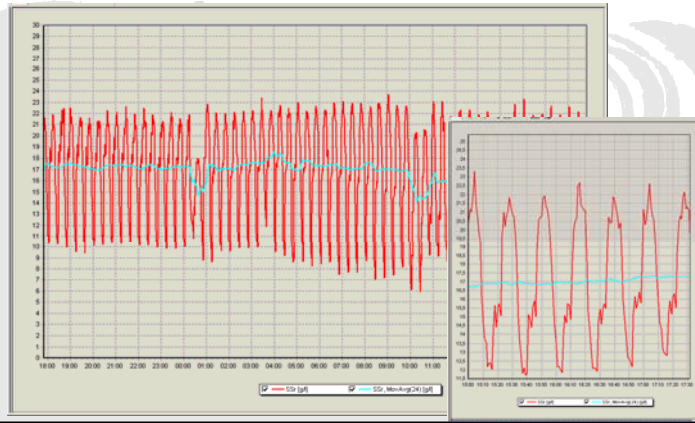
Eksempel: MWRA - opbygning



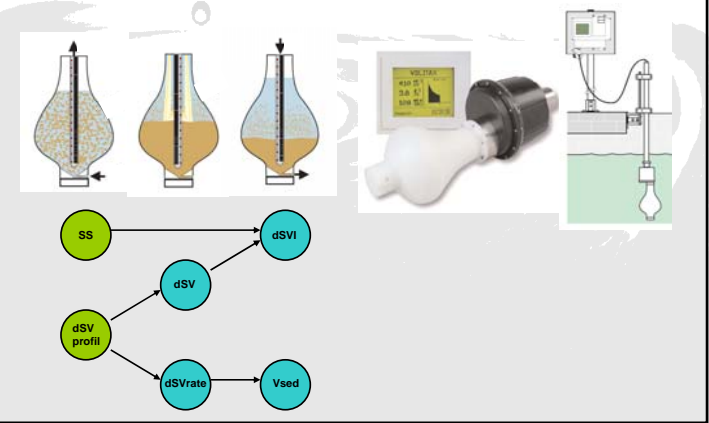




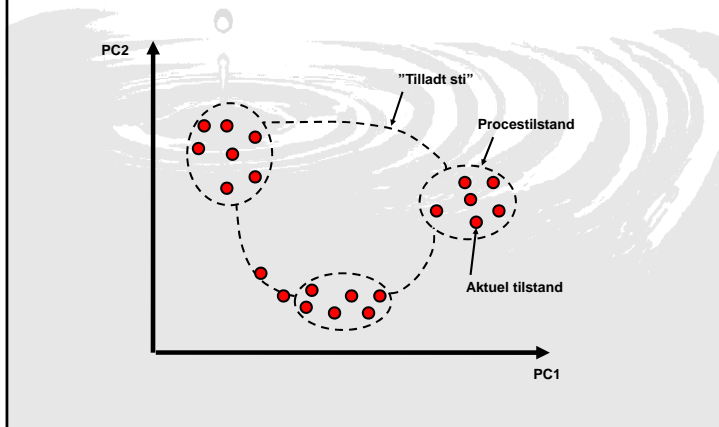
Virtuel sensor: Signalfiltrering



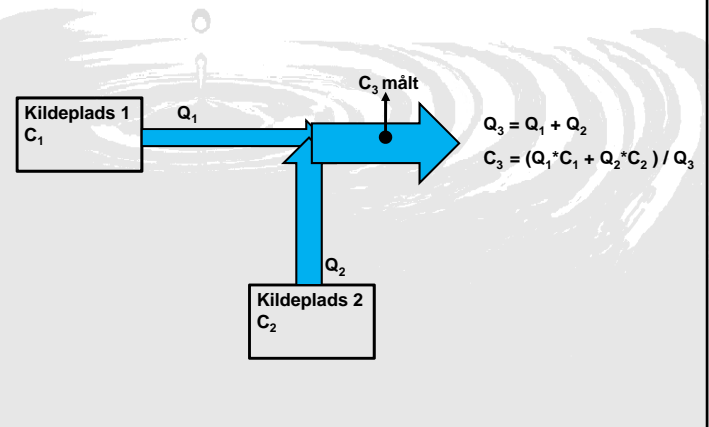
Virtuel sensor: Slamegenskaber fra slamvolumenmåler

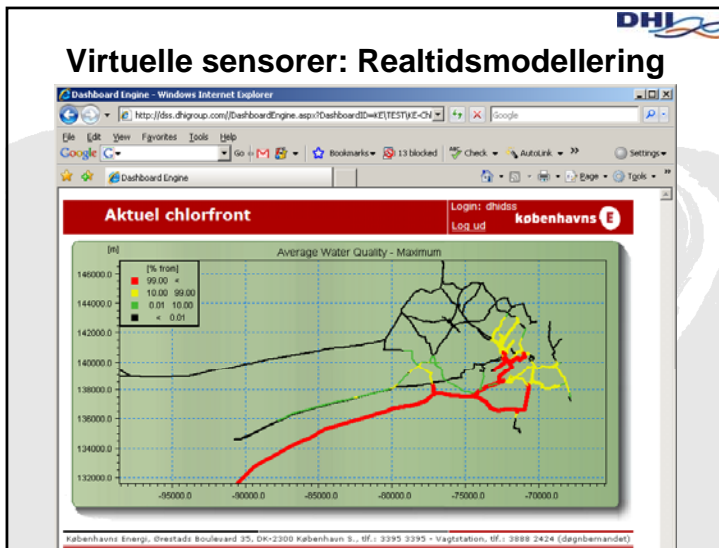
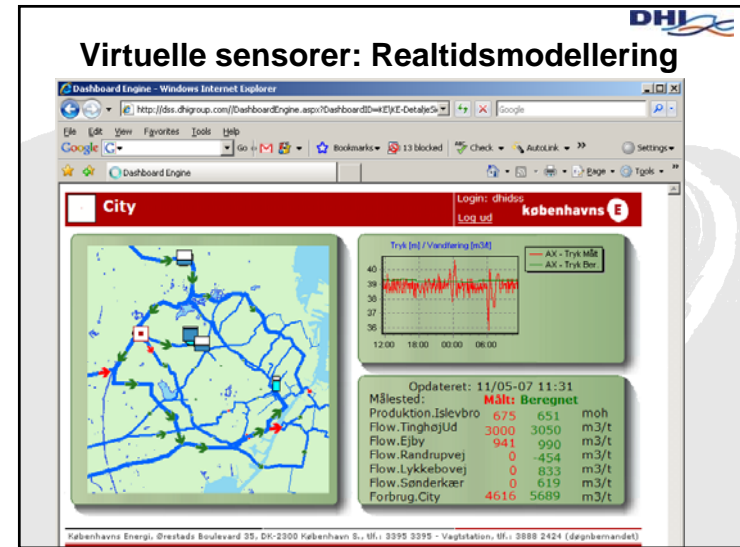
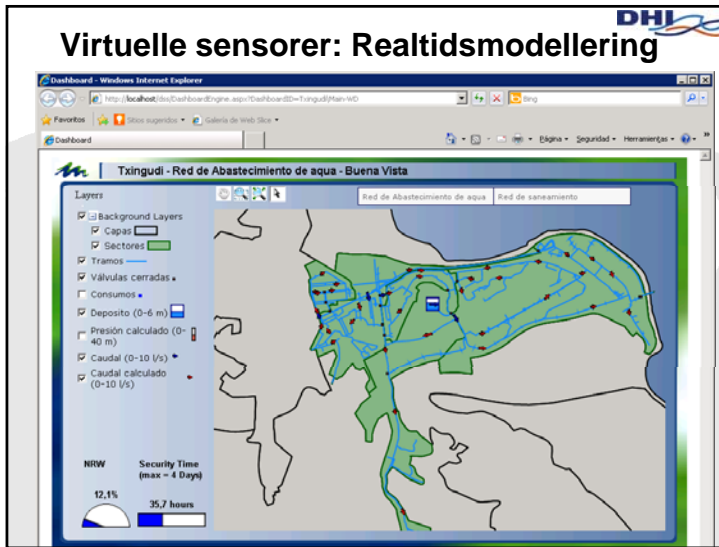


Virtuel sensor: Principialkomponenter



Virtuel sensor: online masseblancer





- ### Projekter ved KE (VTU og Nordhavn)
- Udbygning af målestationsnet og udvidelse med flere målinger
 - Data validering, filtrering og virtuelle sensorer/massebalancer
 - Monitoring af udveksling af vand mellem KE og Greve/Nordvand
 - Bedre tilstandsbeskrivelse og detektion af ændringer
 - Mere detaljeret realtidsmodellering og med flere komponenter på vandkvalitet